

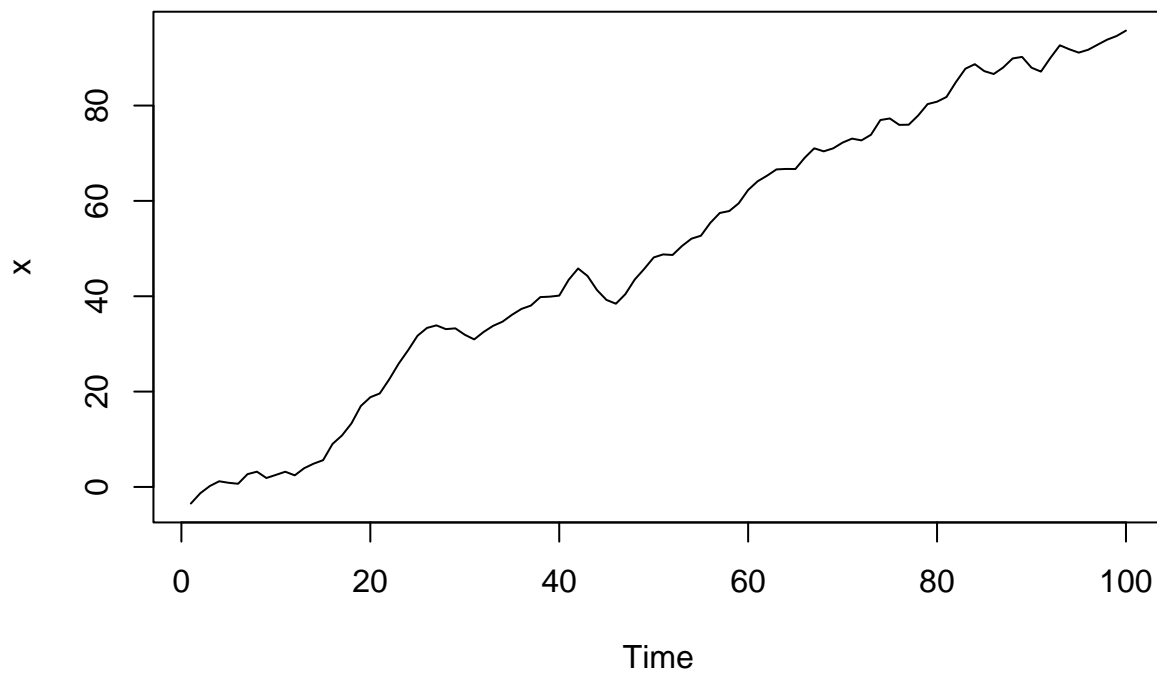
Differencing

Differencing to obtain stationarity

Simulate a non-stationary time series by adding a straight line to a simulated stationary ARMA.

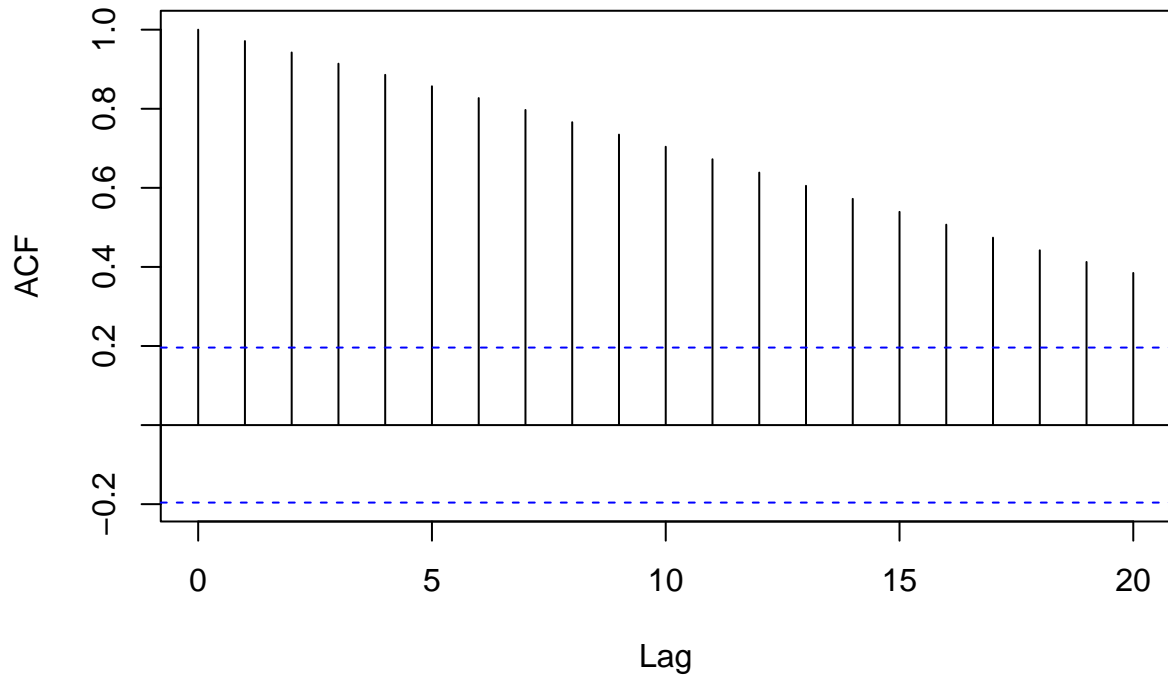
- Confirm that it looks non-stationary by plotting the times series and the acf
- Find the process of differences, i.e. $y_t = x_t - x_{t-1}$ - does this look more stationary?

```
x = arima.sim(100,model = list(ar=0.9,ma=0.9)) + 1:100  
ts.plot(x)
```

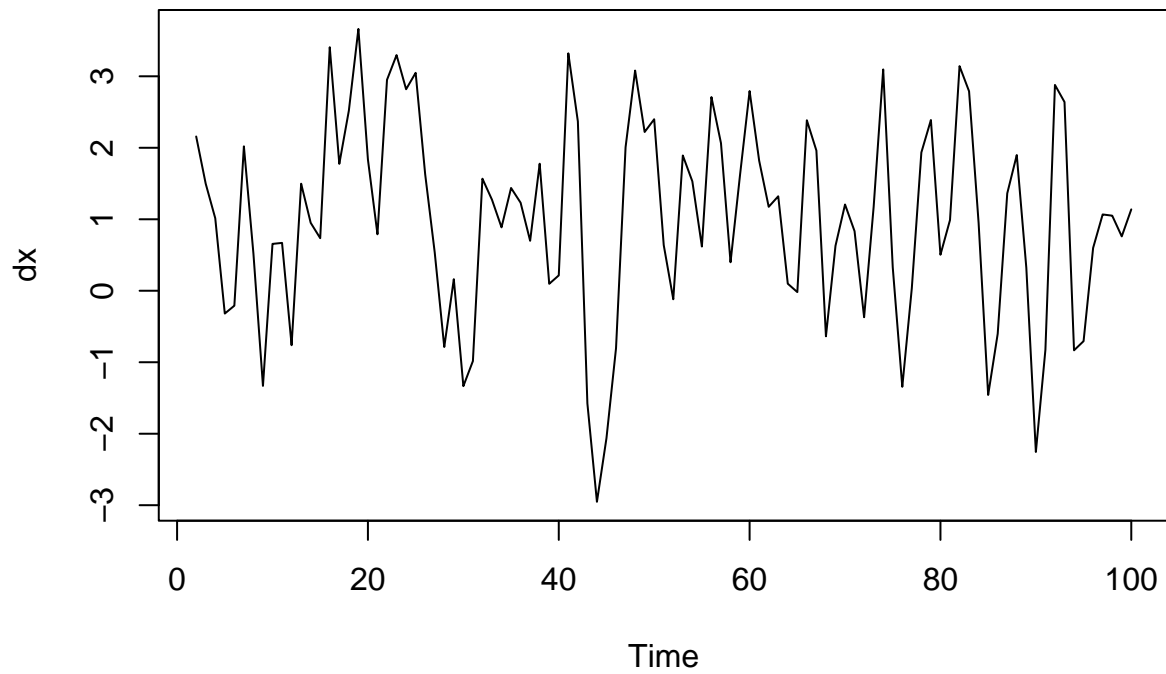


```
acf(x)
```

Series x



```
dx = diff(x)  
ts.plot(dx)
```



```
acf(dx)
```

Series dx

