

# Intro and descriptive statistics

The ASTA team

## Contents

<b>1</b>	<b>Software</b>	<b>1</b>
1.1	<b>Rstudio</b> . . . . .	1
1.2	<b>R</b> extensions . . . . .	1
1.3	<b>R</b> help . . . . .	2
<b>2</b>	<b>Data</b>	<b>2</b>
2.1	Data example . . . . .	2
2.2	Data types . . . . .	2
<b>3</b>	<b>Graphics for quantitative variables</b>	<b>3</b>
3.1	Scatterplot . . . . .	3
3.2	Histogram . . . . .	5
<b>4</b>	<b>Summaries of quantitative variables</b>	<b>6</b>
4.1	Percentiles . . . . .	6
4.2	Boxplot . . . . .	7
4.3	Measures of center of data: Mean and median . . . . .	8
4.4	Measures of variability of data: range, standard deviation and variance . . . . .	8

## 1 Software

### 1.1 Rstudio

- Make a folder on your computer where you want to keep files to use in **Rstudio**. **Do NOT use Danish characters æ, ø, å** in the folder name (or anywhere in the path to the folder).
- Set the working directory to this folder: **Session** -> **Set Working Directory** -> **Choose Directory** (shortcut: Ctrl+Shift+H).
- Make the change permanent by setting the default directory in: **Tools** -> **Global Options** -> **Choose Directory**.

### 1.2 R extensions

- The functionality of **R** can be extended through libraries or packages (much like plugins in browsers etc.). Some are installed by default in **R** and you just need to load them.
- To install a new package in **Rstudio** use the menu: **Tools** -> **Install Packages**
- You need to know the name of the package you want to install. You can also do it through a command:

```
install.packages("mosaic")
```

- When it is installed you can load it through the **library** command:

```
library(mosaic)
```

- This loads the `mosaic` package which has a lot of convenient functions for this course (we will get back to that later). It also prints a lot of info about functions that have been changed by the `mosaic` package, but you can safely ignore that.

## 1.3 R help

- You get help via `?<command>`:

```
?sum
```

- Use `tab` to make **Rstudio** guess what you have started typing.
- Search for help:

```
help.search("plot")
```

- You can find a cheat sheet with the **R** functions we use for this course here.

## 2 Data

### 2.1 Data example

We use data about penguins from the R package `palmerpenguins`

```
pingviner <- palmerpenguins::penguins
pingviner
```

```
## # A tibble: 344 x 8
##   species island   bill_length_mm bill_depth_mm flipper_length_mm body_mass_g
##   <fct>   <fct>         <dbl>         <dbl>         <int>         <int>
## 1 Adelie  Torgersen         39.1          18.7           181           3750
## 2 Adelie  Torgersen         39.5          17.4           186           3800
## 3 Adelie  Torgersen         40.3           18            195           3250
## 4 Adelie  Torgersen          NA           NA             NA            NA
## 5 Adelie  Torgersen         36.7          19.3           193           3450
## 6 Adelie  Torgersen         39.3          20.6           190           3650
## 7 Adelie  Torgersen         38.9          17.8           181           3625
## 8 Adelie  Torgersen         39.2          19.6           195           4675
## 9 Adelie  Torgersen         34.1          18.1           193           3475
## 10 Adelie Torgersen         42            20.2           190           4250
## # i 334 more rows
## # i 2 more variables: sex <fct>, year <int>
```

- What is fundamentally different about the the variables (columns) `species` and `body_mass_g`?

### 2.2 Data types

#### 2.2.1 Quantitative variables

- The measurements have numerical values.
- Quantative data often comes about in one of the following ways:
  - **Continuous variables**: measurements of time, length, size, age, mass, etc.
  - **Discrete variables**: counts of e.g. words in a text, hits on a webpage, number of arrivals to a queue in one hour, etc.
- Measurements like this have a well-defined scale and in **R** they are stored as the type **numeric**.
- It is important to be able to distinguish between discrete count variables and continuous variables, since this often determines how we describe the uncertainty of a measurement.

- Are any of the measurements in our data set quantitative?
- 

### 2.2.2 Categorical/qualitative variables

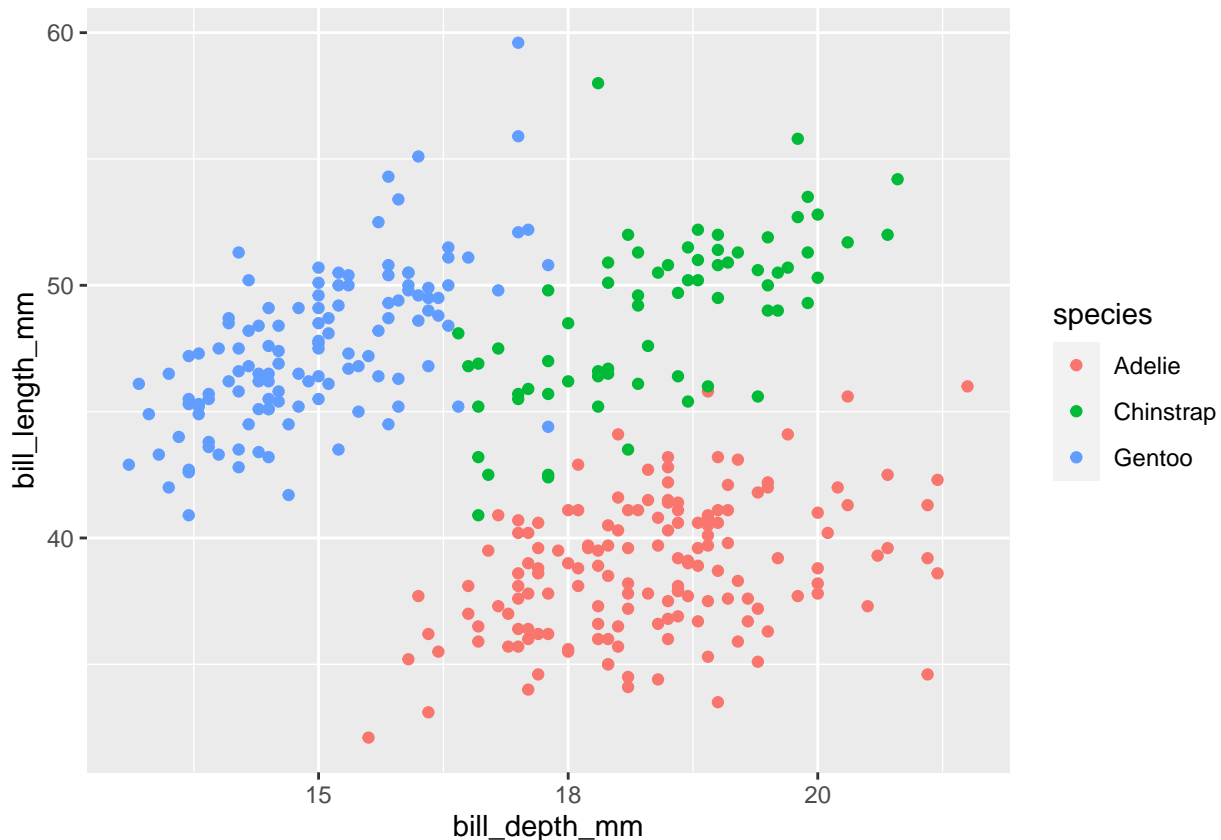
- The measurement is one of a set of given categories, e.g. sex (male/female), social status, satisfaction score (low/medium/high), etc.
- The measurement is usually stored (which is also recommended) as a **factor** in **R**. The possible categories are called **levels**. Example: the levels of the factor “sex” is male/female.
- Factors have two so-called scales:
  - **Nominal scale**: There is no natural ordering of the factor levels, e.g. sex and hair color.
  - **Ordinal scale**: There is a natural ordering of the factor levels, e.g. social status and satisfaction score. A factor in **R** can have a so-called **attribute** assigned, which tells if it is ordinal.
- Are any of the measurements in our data set categorical/qualitative?

## 3 Graphics for quantitative variables

### 3.1 Scatterplot

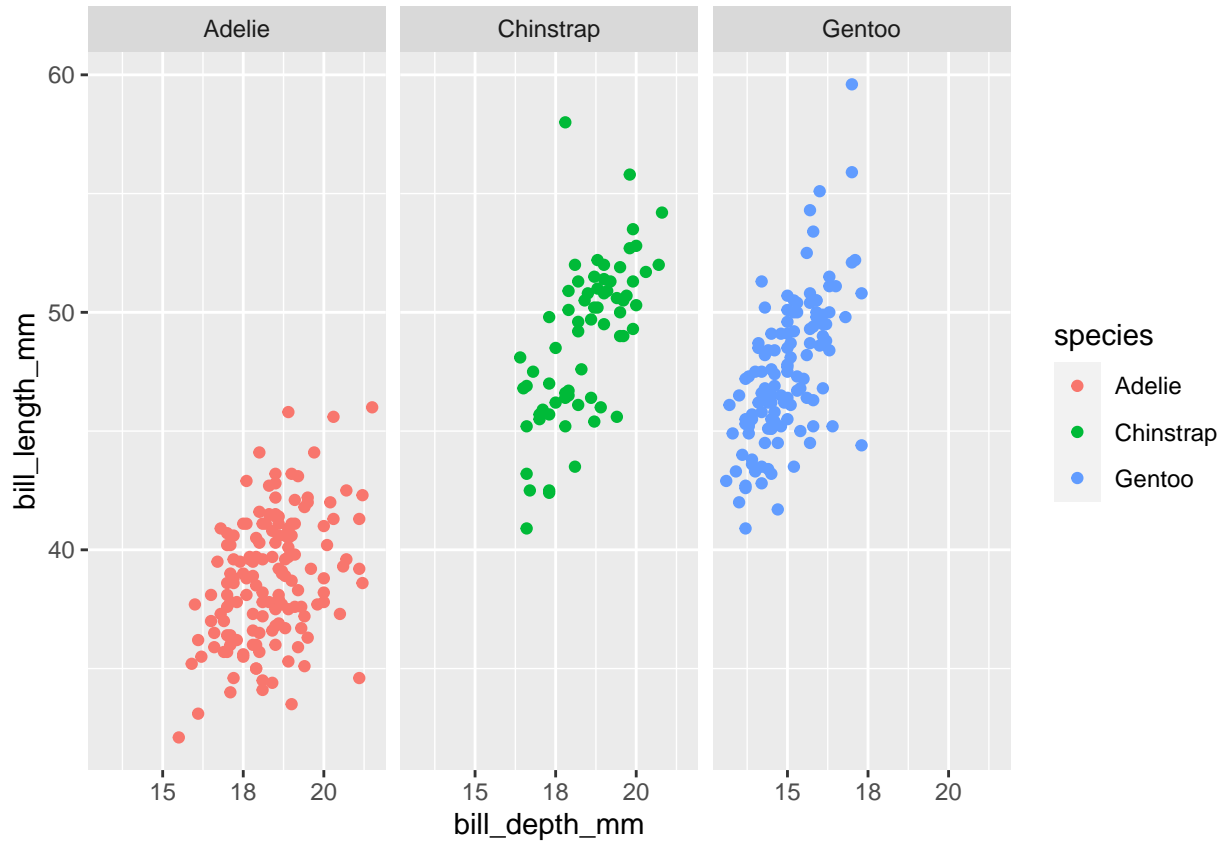
- To study the relation between two quantitative variables a scatterplot is used:

```
gf_point(bill_length_mm ~ bill_depth_mm, color = ~ species, data = penguin)
```



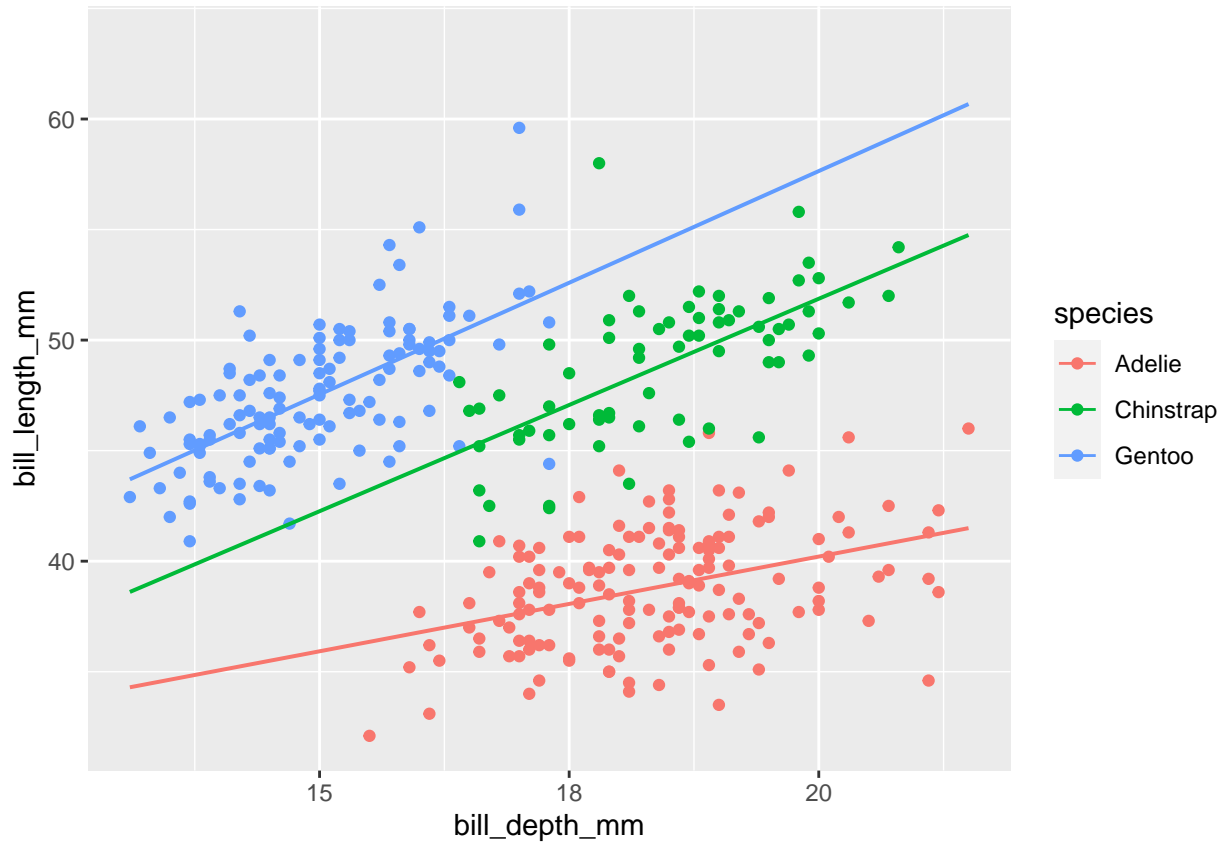
- We could also draw the graph for each species:

```
gf_point(bill_length_mm ~ bill_depth_mm | species, color = ~ species, data = pingviner)
```



- If we want a regression line along with the points we can do:

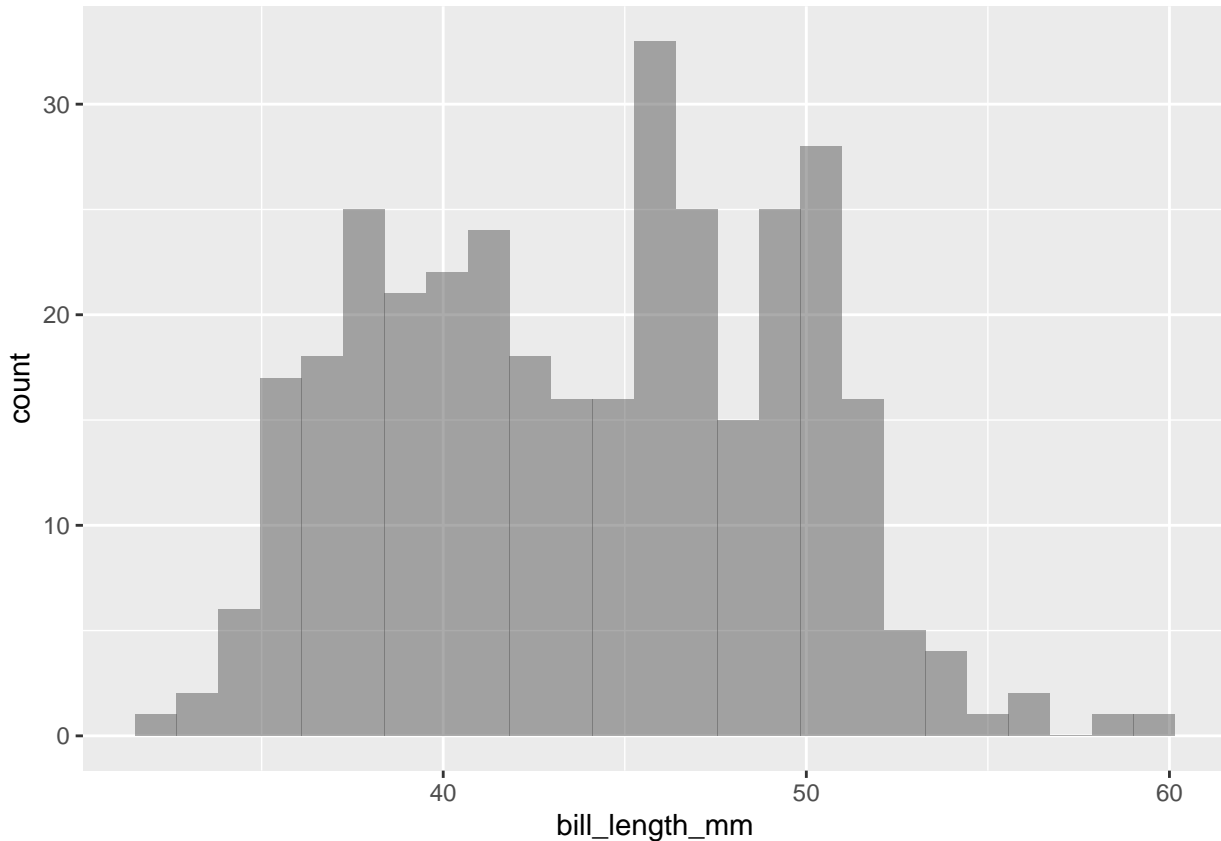
```
gf_point(bill_length_mm ~ bill_depth_mm, color = ~ species, data = pingviner) %>%  
gf_lm()
```



### 3.2 Histogram

- For a single quantitative variable a histogram offers more details:

```
gf_histogram(~ bill_length_mm, data = pingviner)
```



- How to make a histogram for some variable  $x$ :
  - Divide the interval from the minimum value of  $x$  to the maximum value of  $x$  in an appropriate number of equal sized sub-intervals.
  - Draw a box over each sub-interval with the height being proportional to the number of observations in the sub-interval.

## 4 Summaries of quantitative variables

### 4.1 Percentiles

- The  $p$ th percentile is a value such that at least  $p\%$  of the sample lies below or at this value and at least  $(100 - p)\%$  of the sample lies above or at the value.

```
Q <- quantile(bill_length_mm ~ species, data = pingviner, na.rm = TRUE)
Q
```

```
##   species 0% 25% 50% 75% 100%
## 1  Adelie 32 37 39 41 46
## 2 Chinstrap 41 46 50 51 58
## 3  Gentoo 41 45 47 50 60
```

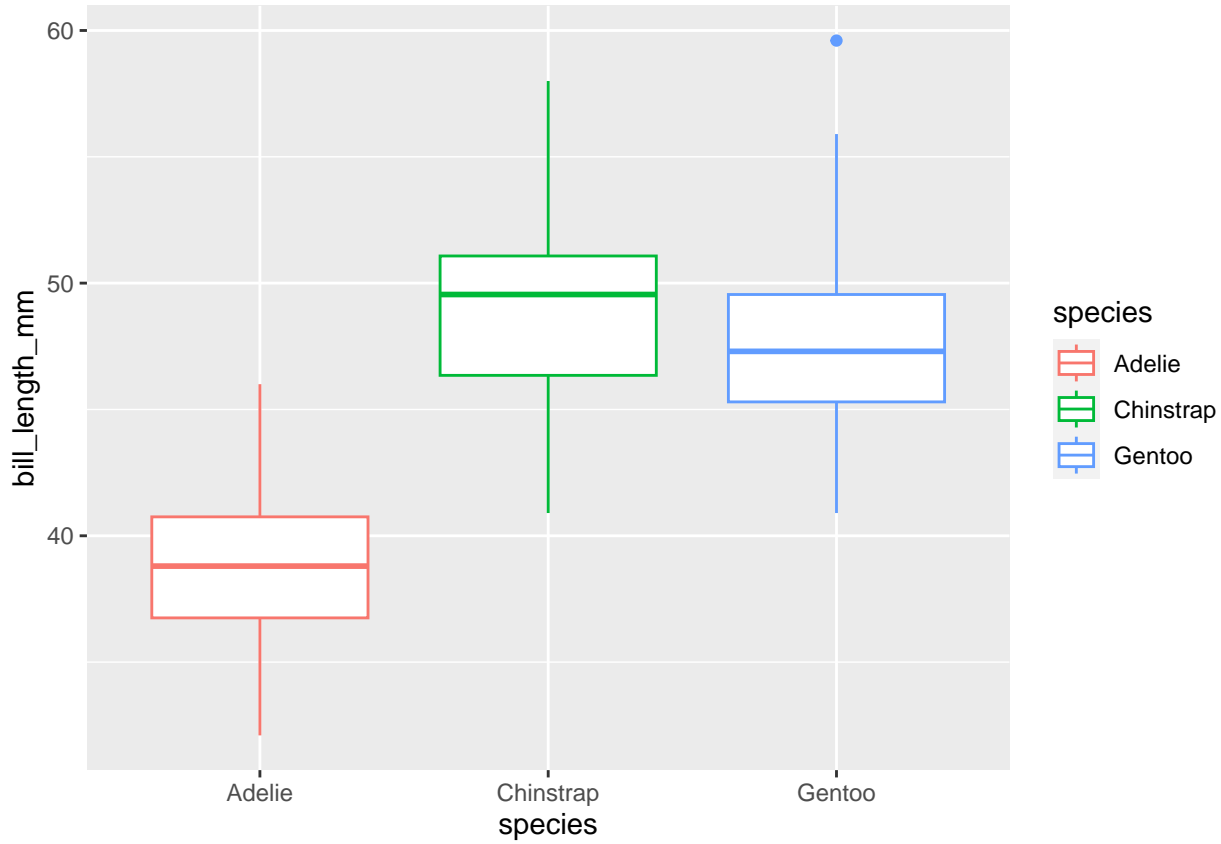
- 50-percentile is the **median** and it is a measure of the center of data as the number of data points below the median is the same as the number above the median.
- 0-percentile is the **minimum** value.
- 25-percentile is called the **lower quartile** (Q1). Median of lower 50% of data.
- 75-percentile is called the **upper quartile** (Q3). Median of upper 50% of data.
- 100-percentile is the **maximum** value.

- **Interquartile Range (IQR)**: a measure of variability given by the difference of the upper and lower quartiles.

## 4.2 Boxplot

Boxplot can be good for comparing groups (notice we put the values on the y-axis here as it is more conventional for boxplots):

```
gf_boxplot(bill_length_mm ~ species, color = ~ species, data = pingviner)
```

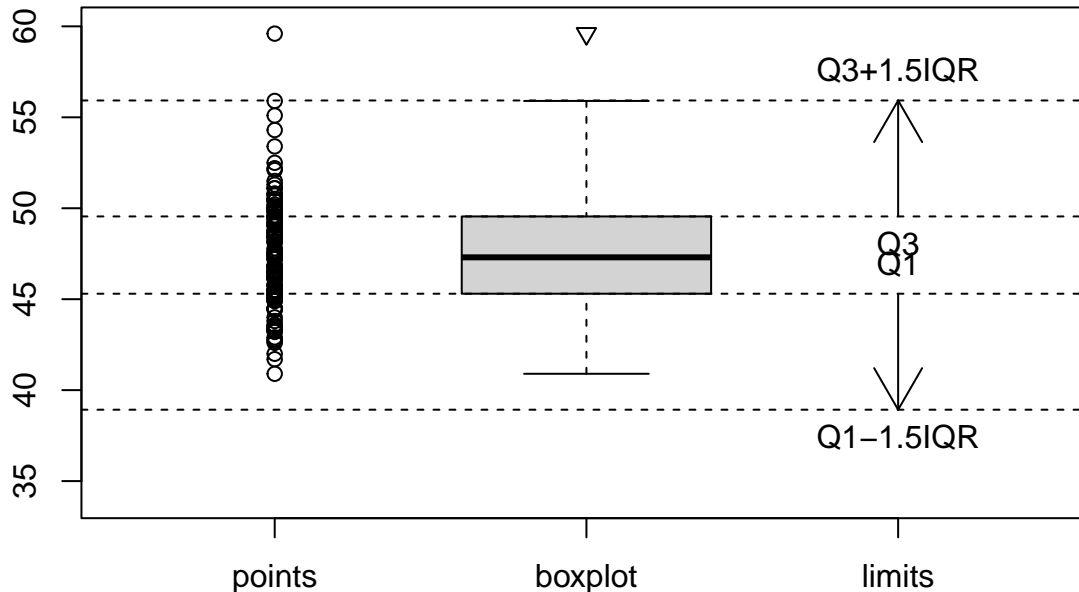


### 4.2.1 How to draw a box plot

- Box:
  - Calculate the median, lower and upper quartiles.
  - Plot a line by the median and draw a box between the upper and lower quartiles.
- Whiskers:
  - Calculate interquartile range and call it IQR.
  - Calculate the following values:
    - \*  $L = \text{lower quartile} - 1.5 \cdot \text{IQR}$
    - \*  $U = \text{upper quartile} + 1.5 \cdot \text{IQR}$
  - Draw a line from lower quartile to the smallest measurement, which is larger than  $L$ .
  - Similarly, draw a line from upper quartile to the largest measurement which is smaller than  $U$ .
- Outliers: Measurements smaller than  $L$  or larger than  $U$  are drawn as circles.

*Note: Whiskers are minimum and maximum of the observations that are not deemed to be outliers.*

## Gentoo bill length



### 4.3 Measures of center of data: Mean and median

- A number of numerical summaries can be retrieved using the `favstats` command:

```
favstats(bill_length_mm ~ species, data = pingviner)
```

```
##   species min Q1 median Q3 max mean sd  n missing
## 1  Adelie  32 37   39 41  46  39 2.7 151      1
## 2 Chinstrap 41 46   50 51  58  49 3.3  68      0
## 3  Gentoo  41 45   47 50  60  48 3.1 123      1
```

- The observed values of `bill_length_mm` are  $y_1 = 46.1, y_2 = 50, \dots, y_n = 49.9$ , where there are a total of  $n = 123$  values.

As previously defined this constitutes a **sample**.

- mean** = 48 is the **average** of the sample, which is calculated by

$$\bar{y} = \frac{1}{n} \sum_{i=1}^n y_i.$$

We may also call  $\bar{y}$  the **(empirical) mean** or the **sample mean**. It is calculated using `mean()` in **R**.

- median** = 47 is calculated using `median()` in **R**.
- An important property of the **mean** and the **median** is that they have the same unit as the observations (e.g. millimeter).

### 4.4 Measures of variability of data: range, standard deviation and variance

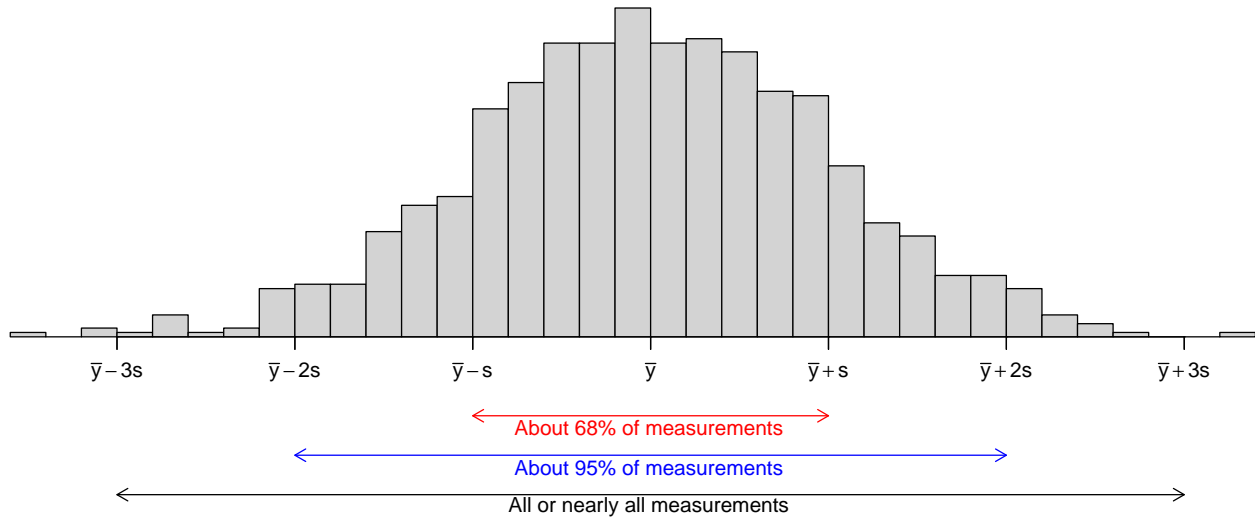
- The **range** is the difference of the largest and smallest observation (`range()` in **R**).
- The **(empirical) variance** (`var()` in **R**) is the average of the squared deviations from the mean:

$$s^2 = \frac{1}{n-1} \sum_{i=1}^n (y_i - \bar{y})^2.$$



- **sd = standard deviation** =  $s = \sqrt{s^2}$  (**sd()** in **R**).
- Note: If the observations are measured in mm, the **variance** has unit  $\text{mm}^2$  which is hard to interpret. The **standard deviation** on the other hand has the same unit as the observations.
- The standard deviation describes how much data varies around the (empirical) mean.

#### 4.4.1 The empirical rule



If the histogram of the sample looks like a bell shaped curve, then

- about 68% of the observations lie between  $\bar{y} - s$  and  $\bar{y} + s$ .
- about 95% of the observations lie between  $\bar{y} - 2s$  and  $\bar{y} + 2s$ .
- All or almost all (99.7%) of the observations lie between  $\bar{y} - 3s$  and  $\bar{y} + 3s$ .